



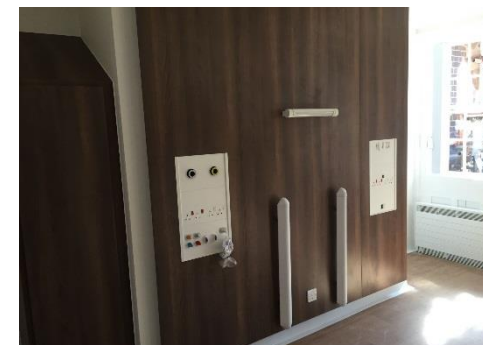
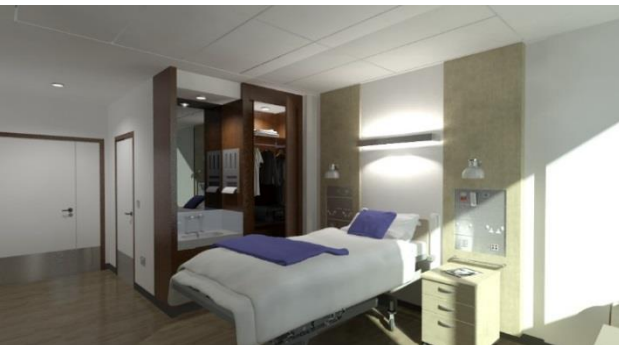
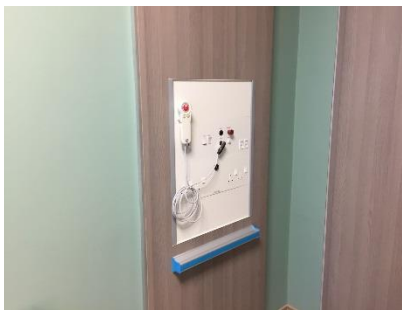
Company Profile



CABL  FLOWTM
H E A L T H C A R E

applications

CABLEFLOW™





MADE IN BRITAIN
DISTRIBUTED WORLDWIDE



Innovation is at the heart of an evolutionary healthcare infrastructure. Challenging boundaries whilst being respectful of clinical skills are two valued philosophies which ensure knowledge led developments in bedroom architecture.

At CABLEFLOW we recognise the need to be different, to ensure product development offers practical and sustainable progression whilst always ensuring full compliance with Patient Safety Standards and improving the clinical environment.

We are proud of our British healthcare heritage which offers universal application around the world. Having been conferred a prestigious Queens Award for Innovation our client's take confidence in that unique recognition as a market leader.

As Britain's leading medical supply unit manufacturer our range of solutions meet a vast array of design concepts throughout all clinical environments whether primary or tertiary care areas, and every speciality in-between.

In 2005 our **integra** product range became the first and only bedhead trunking system to achieve Royal recognition with the conferment of a **Queens Award for Enterprise: Innovation** from Her Majesty Queen Elizabeth II.

Improving the clinical architecture, the patient experience and ensuring flexibility and adaptation in later use are hallmarks of our innovative integrated lighting solutions. At home in an acute hospital setting or more domestic environments such as Hospice's and the like our systems can be tailored to your requirements.



CABLEFLOW INTERNATIONAL LIMITED are the UK's foremost designers and manufacturers of extruded aluminium cable-management systems for use in both healthcare and commercial applications throughout the world, with many thousands of installations as reference sites completed.

Over 80% of the products we produce are supplied to the healthcare sector where we are broadly credited within the UK as being the innovators in Bedhead Services Trunking System solutions. CABLEFLOW is currently the fastest growing company in our sector, with continued and sustained growth since being established in 1989. We see this as a clear indicator of the markets acceptance of the products we produce and the continuity in the quality of products we deliver.

The company was recognised amongst the UK's elite businesses in 2005 when Her Majesty Queen Elizabeth II conferred a Queens Award for Enterprise upon the company in the Innovation category, one of only 43 such Awards in the year.

Recognising our unrivalled expertise in the markets we service, the company currently holds the Chair of the BEAMA Technical Group for Bedhead Services Trunking Systems, whilst providing appointed CENELEC experts to UK, European and international standards technical bodies.

Our experience and expertise in areas of medical supply unit design, bedhead trunking manufacture and healthcare lighting solutions sets us aside from our competition.

As a leading manufacturer we are at the forefront of innovative design, pushing the boundaries of clinical delivery to ensure both patient and clinical experiences are maximised, leading to improved patient care.

Governance and technical compliance, all of which have a distinct part to play in patient safety within the clinical environment are core to our beliefs of product development and solutions delivery.

Strategically structured into various operating departments from our manufacturing bases in Buckinghamshire, our multi-million pound business develops, manufactures, supplies and in many cases install a comprehensive range of cable-management trunking systems.

An output in excess of 500,000 linear metres of aluminium extrusions per annum makes the company the largest supplier of Bedhead Services Trunking Systems in terms of volume within the UK,



Having spent some considerable time establishing our products and services within the UK market, our strategy also recognises a longer-term plan to establish our products in selected overseas markets.

As a result of the concentration on core UK business, CABLEFLOW still remains a new brand name to many clients throughout the world. The introduction of our systems into new markets is enhanced by the wealth of experience and reputation developed within the UK over more than 25 years as an innovative medical supply unit solutions provider.

Our outstanding range of fully integrated Bedhead Services Trunking Systems, incorporating functional integral lighting are recognised globally. Our philosophy of linking innovative bedhead containment design with technologically advanced lighting components to provide enhanced user features for improved patient care has placed Cableflow at the forefront of in-patient lighting innovation.

We continue to supply systems to many of the leading nurse call system manufacturers and medical gas installers throughout the world such as the adaptability and flexibility of our systems philosophy.

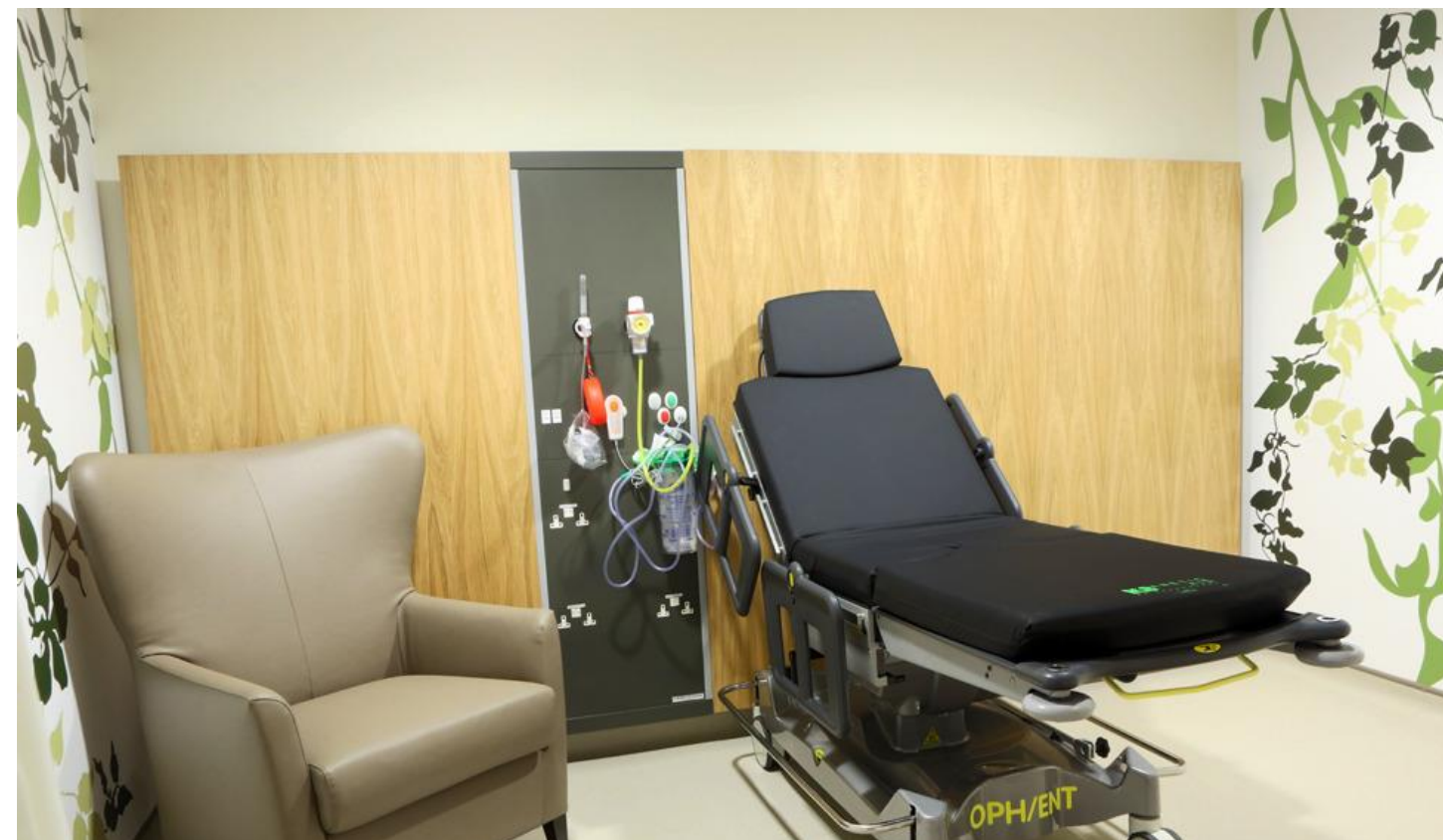


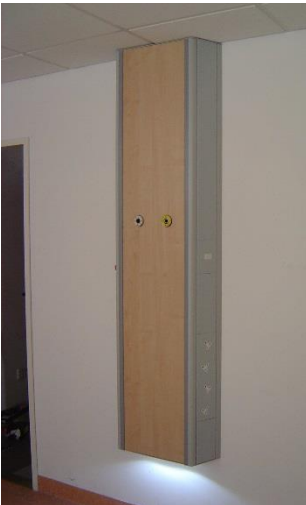
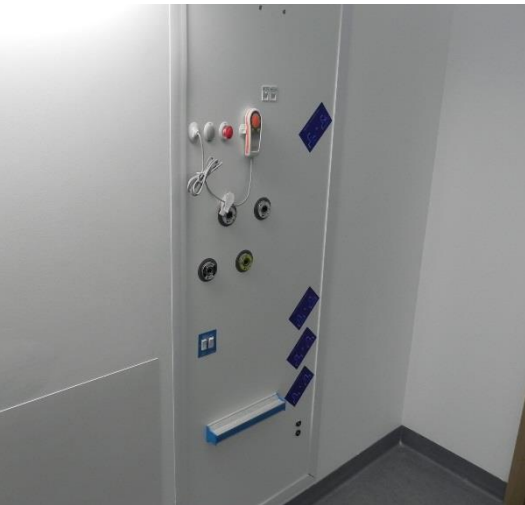
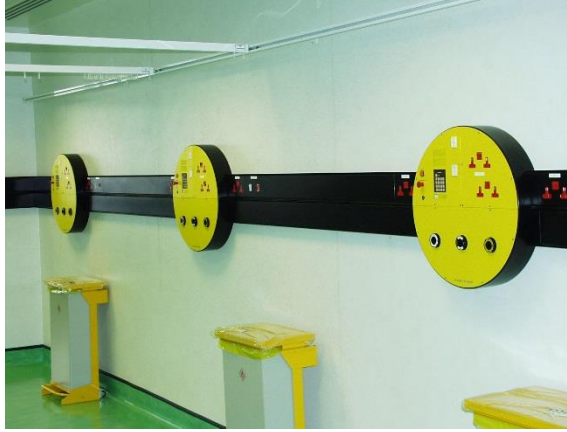
As a recognised NHS procure 21+ bedhead services provider the benefits derived from a British manufacturer are immense. All of our systems are designed and manufactured in the UK and can be purchased directly.

Our systems and support services are complemented by strategic alliances with some of the world's largest healthcare system solution providers, encouraging the integration of ancillary equipment at the bedhead, aiding both the care and recovery processes whilst improving the patient and clinician experience.

With regional offices now located around the world our innovative healthcare product range is available globally with regional adaptations to suit local governance and regulatory controls.

The company is privately owned by its shareholder Directors who are committed to developing innovative and technologically advanced products for the healthcare industry world-wide.







MADE IN BRITAIN
DISTRIBUTED WORLDWIDE

CABLE  **FLOW**™

Cableflow
International
Limited

For full product data sheets go to our website or contact us directly

www.cableflow.com

Cableflow International Limited
Windsor House | Abbey Barn Road
High Wycombe | Buckinghamshire
HP11 1NN | United Kingdom

(tel) 00 44 (0) 1494 52 88 11
(fax) 00 44 (0) 1494 52 11 88
(email) sales@cableflow.com

Registered in England 2356618

Copyright 2015 v1

