



MADE IN BRITAIN
DISTRIBUTED WORLDWIDE



V1.25b

CABLEFLOW Universal Channel CABLEFLOW Wall Channel

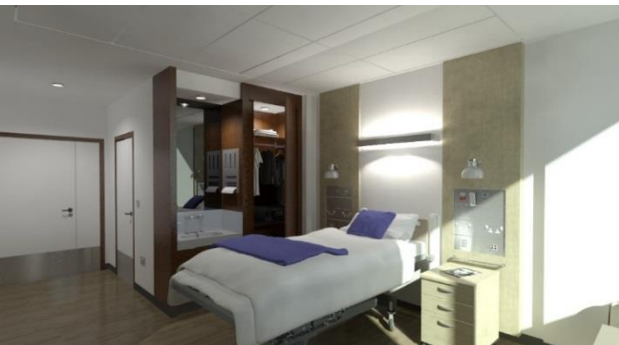
Medical Electrical (ME) equipment mounting channel



CABLEFLOW™
H E A L T H C A R E

applications

CABLEFLOW™





MADE IN BRITAIN
DISTRIBUTED WORLDWIDE



Innovation is at the heart of an evolutionary healthcare infrastructure. Challenging boundaries whilst being respectful of clinical skills are two valued philosophies which ensure knowledge led developments in bedroom architecture.

At **CABLEFLOW** we recognise the need to be different, to ensure product development offers practical and sustainable progression whilst always ensuring full compliance with Patient Safety Standards and improving the clinical environment for clinicians and patients alike.

We are proud of our British healthcare heritage which offers universal application around the world. Having been conferred both a prestigious **Queens Award for Enterprise: Innovation** and a **Kings Award for Enterprise: Innovation** users of our products and systems take confidence in this unique recognition of Cableflow as a market leader.

Recognised as Britain's foremost medical supply unit manufacturer our range of products whether standard or bespoke offer solutions to satisfy many in-patient design concepts across all clinical environments whether primary or tertiary care areas, and every speciality in-between.

In 2005 our **integra** product became the first and only linear bedhead trunking system to achieve Royal recognition with a **Queens Award for Enterprise: Innovation** from Her Majesty Queen Elizabeth II. This achievement was further endorsed in 2023 with a **Kings Award for Enterprise: Innovation** for our (POAG) equipotential earth bonding socket.

Improving the clinical architecture, patient and clinician experience whilst ensuring flexibility and adaptation in later use are hallmarks of our innovative bedhead solutions. Whether in an acute hospital setting or more domestic environments such as Hospice's and the like our systems can be tailored to your requirements.



PRODUCT OVERVIEW

CABLEFLOW equipment mounting Channels are used to secure a variety of ME Equipment (see *IEC 60601-1 for a definition*) and peripheral products used in clinical environments. Channels are manufactured in robust 6063 T6 extruded aluminium and are finished in a durable anodised AA05 finish to BS 1615:2000.

CABLEFLOW Channel is designed to be compatible with Device mounting solutions from a variety of manufacturers such as but not limited to; GCX Corporation, CIM-Med, Coriton, Bytec, Ergomounts, Amico Corp (MRS adapter mounts), Ergotron etc.

Channels are manufactured in an off-the-shelf range of standardised pre-fabricated lengths from 200mm upto and including 1065mm, as well as bespoke lengths for unique application. *For bespoke lengths please contact our sales team.*

Channels enable the mounting hardware (foot plate etc) to be positioned anywhere in the channel length. Channels suit a variety of applications and accommodate the mounting of Devices with different vertical height requirements to suit the specific clinical application and the functional needs of individual clinicians.

In some installation environments, it may be necessary to consider utilising two sections of channel either adjacent to each other or, mounted one above the other to facilitate the ease of installation and maintenance of the mounted Devices.

Aluminium is durable and recyclable and this product further contributes towards our ongoing sustainability objectives adopting a 'buy once, use for life' concept' that embeds sustainability and supports a more circular economy at the core of product selection.

Two types of channels are available: **Universal** (standard) and **Wall Mount**.

UNIVERSAL Channel

Universal Channel is intended to be mounted to specific engineered applications where a support structure is provided as part of that engineered application, such as on a medical supply unit (see *ISO 11197 for definition*) or on mobile carts, anaesthesia machine surfaces and other portable clinical Devices.

CABLEFLOW Universal Channel is fixed to its receiving support surface using an appropriate quantum of M6 machine screws with a domed head of appropriate length for the specific mounting application (not supplied) and in appropriate quantity to suit the maximum load to be supported.

CABLEFLOW Universal Channel can be located onto mobile medical carts or anaesthesia machine mounts. Where required, the Channel can be machined in-house to suit a specific mounting footprint as required. *Please contact us for further information on bespoke requirements.*

We also supply ancillary mounting solutions from a variety of manufacturers to suit this Channel so please contact our sales team for further assistance.

WALL Channel

CABLEFLOW Wall Channel is designed to be fixed to metal or wooded studs or other pattress types within gypsum boarded partition walls, solid blockwork walls or solid surfaces constructed from a variety of materials. The Channel construction is a robust 6063 T6 extruded aluminium extrusion and will support up to 50 kg or where moveable with torque, up to 50N loads.

Wall Channel is offered in three lengths to give flexibility in deployment across clinical locations where this product would be applied.

The principle difference between Wall Channel and Universal Channel is the pattern of fixings.

Bespoke lengths are available to suit your specific needs, please contact our sales team.





INSTALLATION GUIDANCE

CABLEFLOW Wall Channel should be installed using appropriate fixing Devices to suit the surface being affixed to and to manage the anticipated load. *(no fixings are supplied with Channels as the specific fixing is required to suit the surface being mounted on to).*

We recommend that irrespective of the weight of the Device being supported, the wall structure, or the fixing being used that the maximum load does not exceed 40kg/40N.

Cableflow Wall Channel provides additional fixing points in a structured pattern with pre-manufactured 6mm countersunk fixing holes to distribute load and cater for torque when operating attached equipment.

The safe installation of channels is important and is the installer's responsibility.

Installation should be performed by competent personnel as designated by the contractor or clinical facility.

Fully detailed Installation guidance is provided within the packaging of each Channel length.

Should you require technical support please contact our CABLEFLOW technical team and ask to speak with a product specialist if you have questions about Channel selection or installation.

DEVICE MOUNTING SECURITY

Each Channel length is supplied with a bespoke blue polymer **Lower Device Stop** that prevents the equipment mount sliding out of the bottom of the Channel. In the interests of Device safety this **Lower Device Stop** is located at the bottom end of each Channel and should not be removed. It is retained in place by a discreet M4 x 16 mm 'grub' screw requiring a 2mm allen key tool.



Always ensure that the Channel is installed in the correct vertical orientation with the **Lower Device Stop** located at the lowest position.

The upper end of each Channel is fitted with a 'one-way' blue polymer **Depressible Safety Lock** during manufacture assembly. This **Depressible Safety Lock** allows the foot of the Device mount to be located into the Channel from the top but will not allow the foot of the Device mount to be removed via the top of the Channel until the safety lever has been depressed, allowing the mount to slide over it for removal. This feature facilitates the removal and re-location of ME equipment and other Devices between clinical spaces as required, without the use of a key or tool by clinicians.

The mounting height of Channel varies on walls and medical supply units subject to application. The ultimate position of each item of equipment should be considered in conjunction with the movement range of any variable height equipment mounts intended to be used within each Channel.



PRODUCT MARKING & REGULATORY COMPLIANCE

CE marking is specifically linked to harmonised standards within the framework of European Union (EU) legislation, particularly for products covered by specific Directives and Regulations. If a product is not covered by a harmonized standard, CE marking is not applicable unless a European Technical Assessment (ETA) is obtained.

No European Technical Assessment (ETA) has been applied for in respect of **CABLEFLOW Channel** as a stand-alone product, which follows the healthcare industry approach to this product type.

In the absence of any national or harmonised international product standard for this particular product type as a stand-alone product it is therefore considered as un-marked.

However, this product may be used as an external component on or within an OEM product designed to meet the requirements of a harmonised standard, for example IEC 60601-1, such as a *medical supply unit* (see ISO 11197) an anaesthesia machine or other mobile Device cart. In this regard the **CABLEFLOW Channel** is considered as an unearthed externally ACCESSIBLE PART as set out in IEC 60601-1 and is CE marked accordingly.



All of our products classified as medical product risk class 1 are low risk non-invasive products, however, the **CABLEFLOW Channel** is not a MEDICAL DEVICE, nor should it be considered as such.

The **CABLEFLOW Channel** is stand-alone product that can be classified as a medical product class 1 before it is integrated into an overall MEDICAL DEVICE or assembly. A MANUFACTURERS DECLARATION OF CONFORMITY is provided, for example, when it is incorporated into a wider assembly that does constitute overall classification as a MEDICAL DEVICE.

EARTHING OF THE CHANNEL

Where required by the relevant construction arrangements and design of third-party manufactured or assembled equipment the **CABLEFLOW Channel** can be earthed via its securing Device fixing holes and an appropriate fixing connecting to earth. Please contact our technical support team for further assistance.

SUSTAINABLE & RESPONSIBLE PRODUCT DESIGN

CABLEFLOW Channel is designed and manufactured in the United Kingdom and contributes to our national circular economy across the UK.

CABLEFLOW Channel supports our sustainability goals as a recyclable product with a single application that is unlikely to have to be replaced in an expected 30 year life-cycle. More than 75% of all aluminium ever produced is still in use today either as an original product or, recycled for re-application. **CABLEFLOW Channel** is lightweight and efficient in its structure resulting in a reduced embodied carbon footprint whilst being versatile in application, and enforcing its longevity in use.

CABLEFLOW Channel is 100% recyclable. Recycling aluminium requires significantly less energy than producing product from raw materials, saving up to 95% of the energy used in primary production. The trading offset of initial production versus recycling is an often ignored facet of aluminium usage in construction materials and components.

CUSTOM-DESIGNED SOLUTIONS

To discuss your requirements for custom-designed and own-branded solutions, please contact us for custom-designed solutions.











MADE IN BRITAIN
DISTRIBUTED WORLDWIDE

CABLE FLOW™

Cableflow
International
Limited



For full product data sheets go to our website or contact us directly

www.cableflow.com

Cableflow International Limited | Windsor House | Abbey Barn Road | High Wycombe | Buckinghamshire | HP11 1NN | United Kingdom

(tel) 00 44 (0)1494 52 88 11 | (email) sales@cableflow.com

Registered in England 2356618